

front door side air bag delete

this is to prevent side airbag from blasting through your carbon fiber door panels if you get in an accident. first, make sure negative end of battery is disconnected. located the side air bag and remove it from the door. unplug the connector and put the side airbag face up at a safe place. you don't want the airbag to go off face down which will make a nice projectile lol



to fool the car that the side airbags are still connected - you need to insert some form of resistor range 1.5-2.5 ohms. i use two 1/4 watt 1 ohm connected in series to make it approx 2.3 ohms (they have 5% variance in resistance). these resistor can be had from Fry's electronics or any local electronic stores. don't measure the resistance on the airbag directly. you may set it off lol



place it in the side air bag connector and wrap the resistor with electrical tape. tape it to the foam on the door and you are done ... ready to install door panels





door panel install

the CSL door panels use the same rubber clips on the plastic panel but different door handles so two special brackets are needed as follow:

larger bracket part number: 51417895802

smaller bracket part number: 51417895935

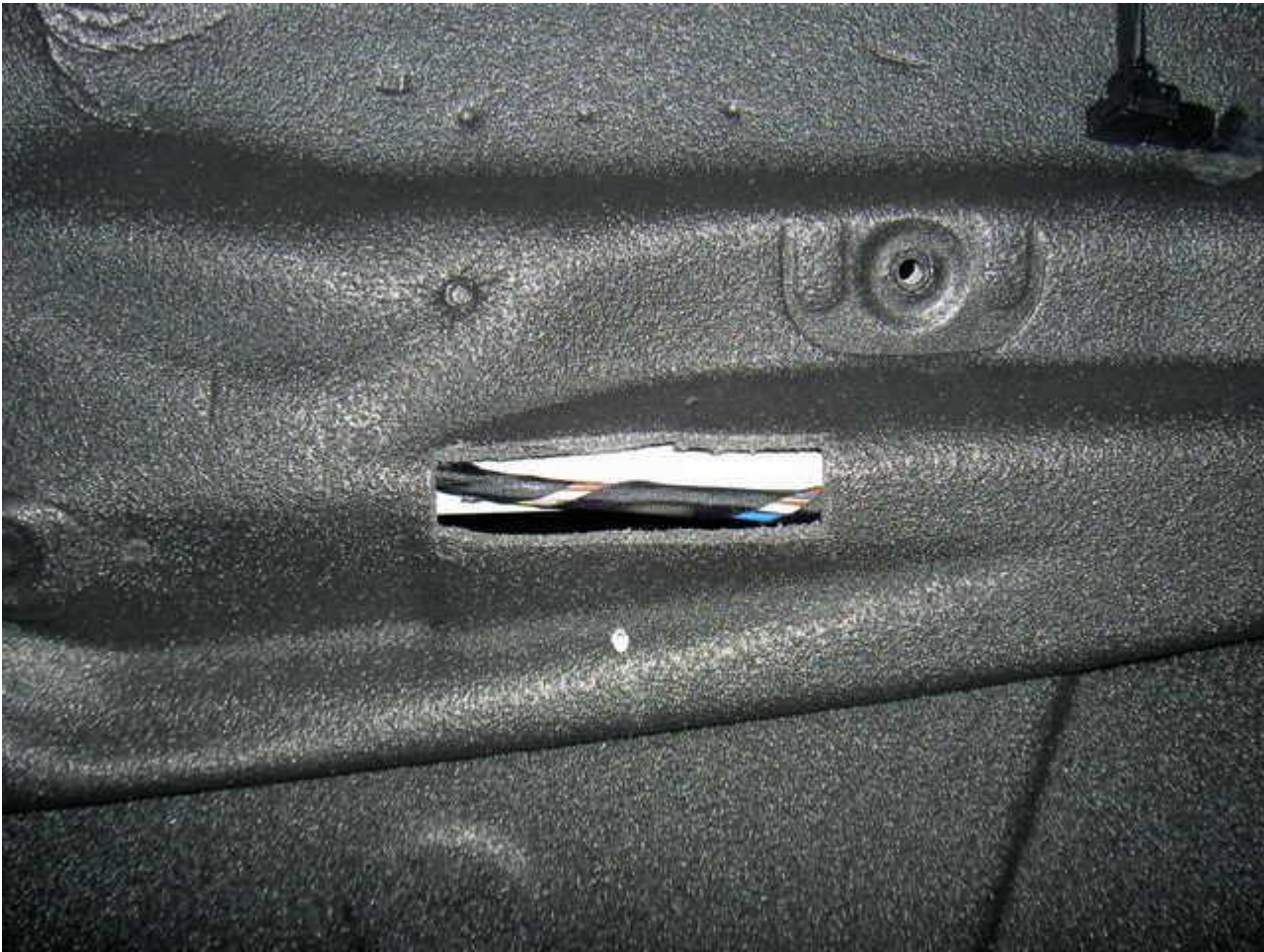
i used sheet metal screw and self locking washer from homedepot to secure the brackets



now make 2 markings through the door handle openings - with the top of the door panel clip on so you will know where to center the bracket. applied some wite-out at the end of a small allen screw driver to make the marking. remove the side mirror control module to allow placement of front bracket.



place the bracket on the door panel so the wite-out marking placed earlier can be seen through the center opening and mark the location of the anchor screws. now carefully cut away the foam to make room for the brackets. the rear bracket location has a wire bundle under the foam. take care not to cut the wire or gouge the paint.



i use a drill bit that is slightly smaller than the sheet metal screw and tape up the lower portion of the foam opening to prevent loose sheet metals from falling inside of the foam/door while drilling - they can rust and stain the door



the front bracket need to be installed in a near 45 degree angle as shown - cut away the foam to allow proper placement. if you chose to use the sheet metal screw and self locking washer, don't gorilla the sheet metal screw - it will strip the thin door metal. just get it tight enough that the self locking washer flattens - it will not come loose



OK, despite your best effort to line up the brackets - it will be slightly off form the opening on the door handles. you might have to gently "ease" the bracket until you can insert the screws through the door handles and clip the panel on it's a PITA lol well worth the effort



OK, now everything has been installed including the rear seats. reconnect the battery and there should be no airbag warning lights. take account of the change and be happy with your 100+ lbs of weight loss. as you can see these interior mods are not simple snap on and take a-lot of work to make everything fit right. end result excellent makeover